



NOLSEN HP-B-SS-100M
mixed circuit / gemischte kreiseinheit / kevert kör

Installation guide
Installationsanleitung
Összeszerelési útmutató



[EN] The co-founder of Nolsen brand is Cool4U Systems Ltd., which has achieved many awards since established in 2001, moreover, the company is exclusive distributor of the Gree air-conditioners and heat pumps' in Hungary.

The other co-founder of Nolsen is Easykit Ltd., which deals with planning and distributing of building engineering systems. Their main goal is to ensure a permanent high quality, price-value ratio and excellent service.

The Nolsen heat centers, together with their accessories, contain all the elements that are essential for heat pump heating of a residential house. In order to facilitate the installation process, our unit comes pre-assembled to the customer. The compact heating center is an excellent choice both for heating modernization and for the construction of a new heat pump system, as well as for those who are new to the implementation of heat pump systems.

[DE] Der Mitbegründer der Marke Nolsen, die Cool4U Systems Kft., die seit ihrer Gründung im Jahr 2001 eine Reihe von Auszeichnungen erhalten hat, ist auch der exklusive ungarische Vertreter von Gree-Klimaanlagen und Wärmepumpen.

Der andere Mitbegründer von Nolsen ist die Easykit Kft., die Haustechniksysteme entwickelt und vertreibt. Das Hauptziel ist es, eine gleichbleibend hohe Qualität, ein gutes Preis-Leistungs-Verhältnis und einen ausgezeichneten Service zu gewährleisten.

Die Nolsen-Wärmezentralen enthalten zusammen mit ihren Zusatzgeräten alle Elemente, die für die Wärmepumpenheizung eines Einfamilienhauses unerlässlich sind. Um die Installation zu erleichtern, werden unsere Geräte vormontiert an den Kunden geliefert. Die kompakte Wärmezentrale ist eine ausgezeichnete Wahl sowohl für die Heizungsmodernisierung als auch für die Neuinstallation von Wärmepumpensystemen und für Neueinsteiger in die Wärmepumpentechnik.

[HU] A Nolsen márka társalapítója a Cool4U Systems Kft., mely 2001-es alapítása óta elismerések sorát nyerte el, valamint nevéhez fűződik a Gree légkondicionálók és hőszivattyúk kizárólagos magyarországi vezérképviselete is.

A Nolsen másik társalapítója az Easykit Kft., mely épületgépészeti rendszerek tervezésével és forgalmazásával foglalkozik. Fő célja az állandó magas minőség, ár-érték arány és kiváló szolgáltatás biztosítása.

A Nolsen hőközpontok kiegészítő egységeivel együtt minden olyan elemet tartalmaznak, melyek elengedhetetlenek egy családi ház hőszivattyús fűtéséhez. A telepítési folyamat elősegítése érdekében berendezéseink előszerelve érkeznek a vásárlóhoz. A kompakt hőközpont kiváló választás mind a fűtéskorszerűsítés, mind pedig új hőszivattyús szisztéma kiépítése esetén, valamint azok számára is akik új belépők a hőszivattyús rendszerek kivitelezésében.

[EN] HP-B-SS-100 HEAT CENTER

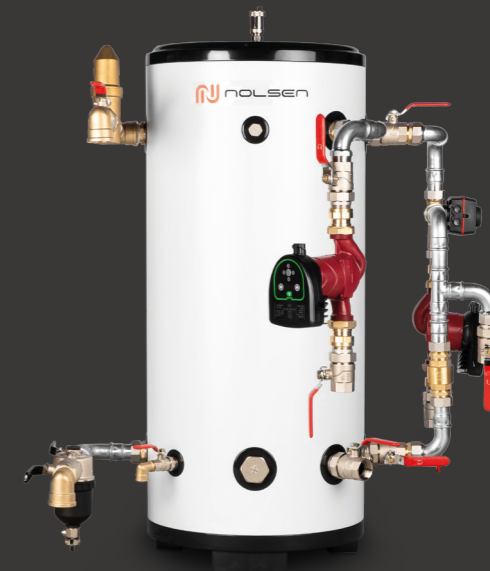
| | |
|-------------------------|---|
| Size | 1030 X 1080 X 620 mm |
| Shell material | Powder coated steel (0,5 mm) |
| Tank material thickness | 1,2 mm |
| Buffer volume | 100 L |
| Buffertank material | Stainless steel (SUS304) |
| Capacity | 4-16 kW (heat pump) |
| Max. pressure, buffer | 10 bar |
| Direct circuit | Yes |
| Mixed circuit | Yes (optional item, ESBE 5/4" mixing valve) |
| Microbubble separator | Yes |
| Magnetic dirt separator | Yes |
| Outer pipe system | Stainless steel |
| Accessories | Wall bracket, Rubber feet |

[DE] HP-B-SS-100 WÄRMEZENTRALEN

| | |
|------------------------------------|--|
| Maße | 1030 X 1080 X 620 mm |
| Mantelung | Pulverbeschichteter Stahl (0,5 mm) |
| Materialdicke des pufferspeichers | 1,2 mm |
| Volumen des pufferspeichers | 100 L |
| Material des pufferspeichers | Rostfreier Stahl (SUS304) |
| Empfohlene wärmeleistung | 4-16 kW (wärmepumpe) |
| Max. Betriebsdruck, Pufferspeicher | 10 bar |
| Direkter kreislauf | Ja |
| Gemischter kreislauf | Ja, als zusätzliche Einheit mit einem ESBE-Mischventil |
| Mikroblasenabscheider | Ja |
| Magnetischer schlammabscheider | Ja |
| Äußeres Rohrsystem | Rostfreier Stahl |
| Zubehör | Wandhalterung, Gleitfuß aus Kunststoff |

[HU] HP-B-SS-100 HŐKÖZPONT

| | |
|---------------------------|----------------------------|
| Termék mérete: | 1030 X 1080 X 620 mm |
| Burkolat: | Porfestett acél (0,5 mm) |
| Lemezvastagság: | 1,2 mm |
| Puffertartály térfogat: | 100 L |
| Puffertartály anyag: | Rozsdamentes acél (SUS304) |
| Teljesítmény: | 4-16 kW (hőszivattyú) |
| Maximális üzemi nyomás: | 10 bar |
| Direkt kör: | Igen |
| Kevert kör: | Esbe keverőszeleppel |
| Mikrobuborék leválasztó: | Igen |
| Mágneses iszapleválasztó: | Igen |
| Külső csőrendszer: | Rozsdamentes acél |
| Tartozékok: | Fali konzol, gumitalp |



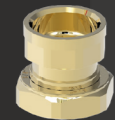
C1



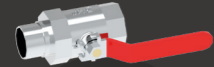
x1
5/4"



x1
6/4"



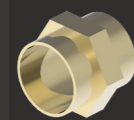
x1
6/4" x 5/4"



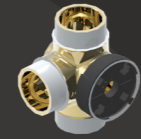
x2
5/4"



x1
5/4"



x2
5/4"



x1
5/4"

C2



x1
5/4"



x1
5/4"



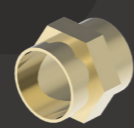
x1
5/4"



x2
5/4"



x3
5/4"



x2
5/4"

C3



x1



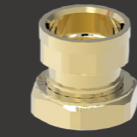
x1



x1
5/4"



x1
6/4"



x1
6/4" x 5/4"



BUFFER TANK
PUFFERSPEICHER
PUFFER TARTÁLY



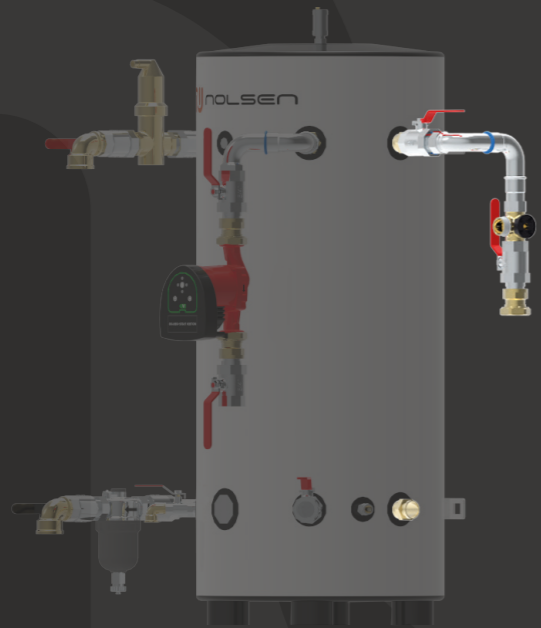
PRIMARY CIRCUIT
GRUNDIERUNGSKREIS
PRIMER KÖR



DIRECT CIRCUIT
DIREKTER KREISLAUF
DIREKT KÖR



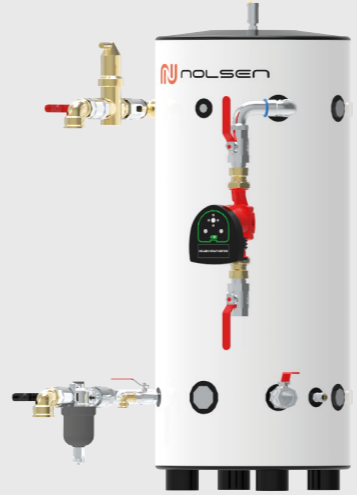
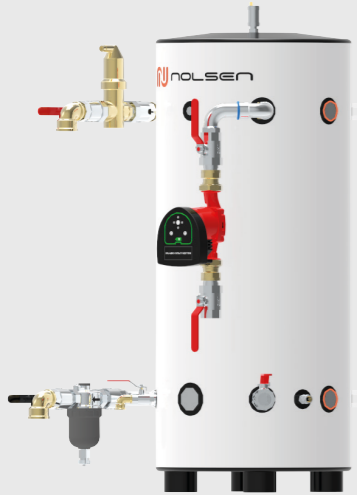
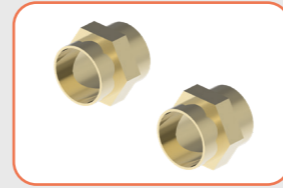
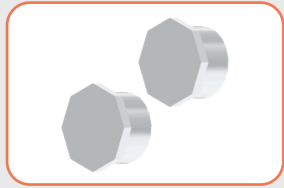
MIXED CIRCUIT
GEMISCHTE KREISEINHEIT
KEVERT KÖR

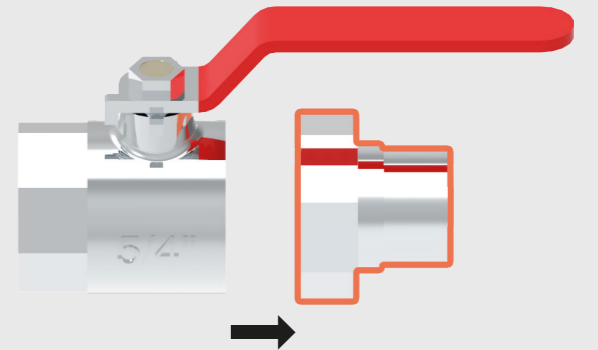
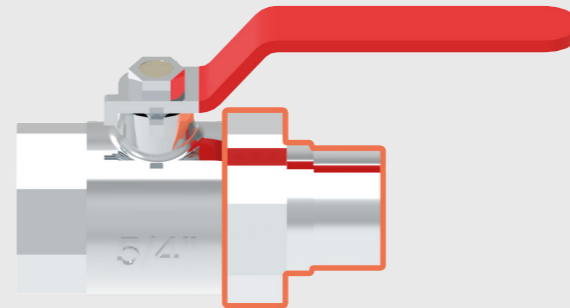
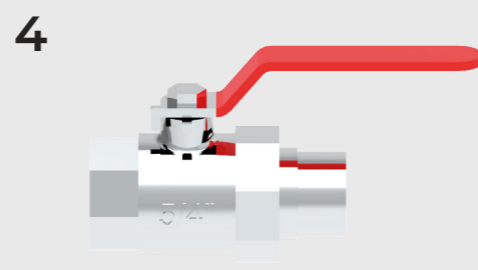
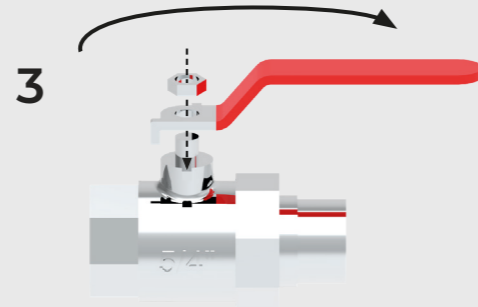
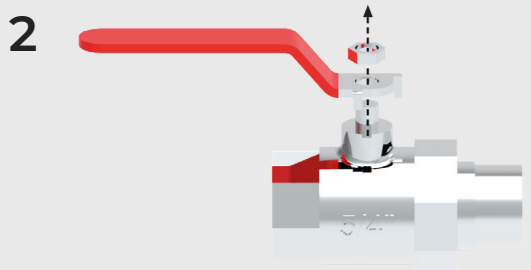
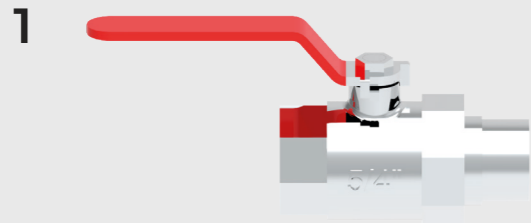
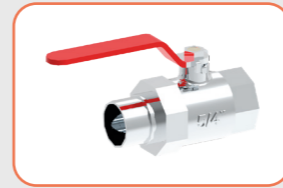
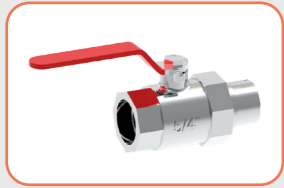


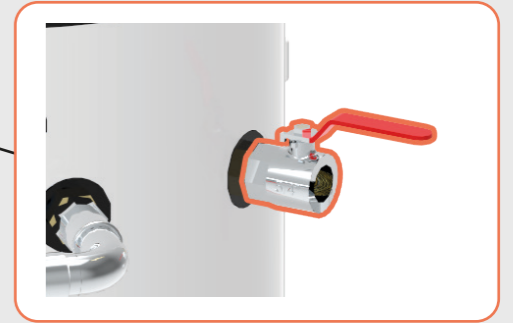
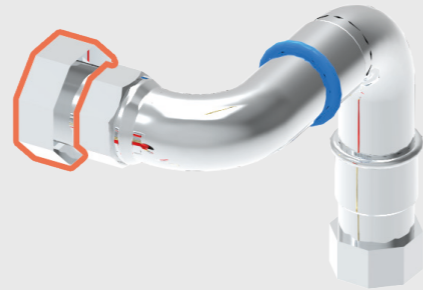
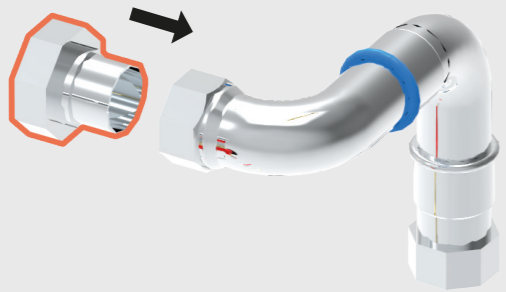
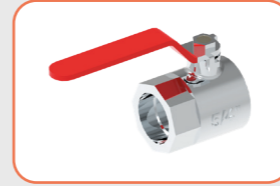
C1

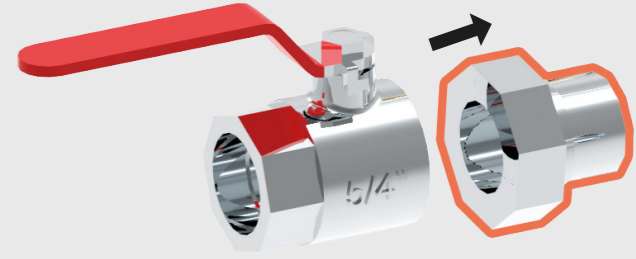
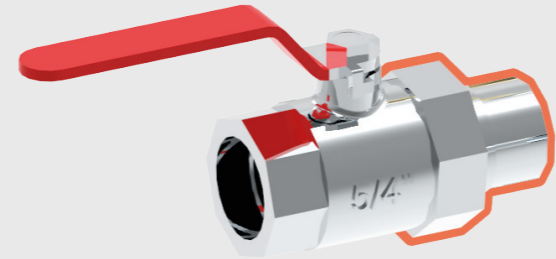
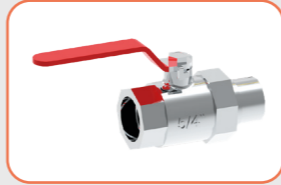
C2

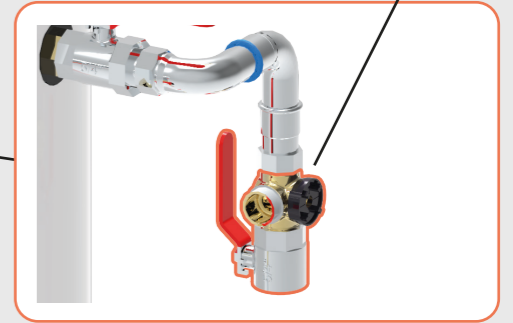
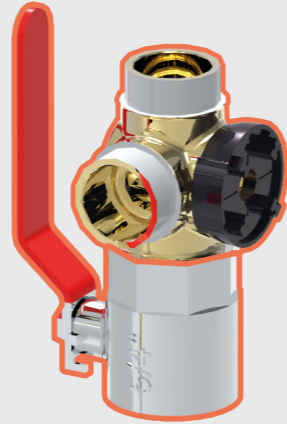
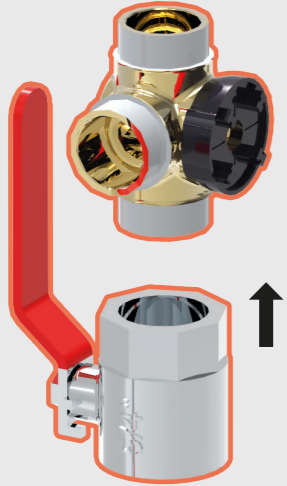
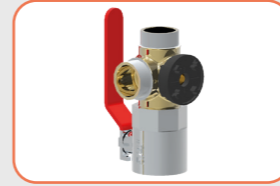
C3

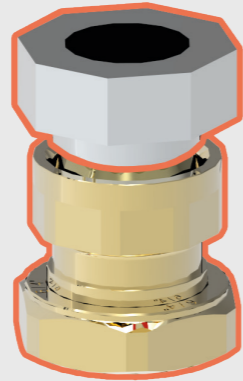
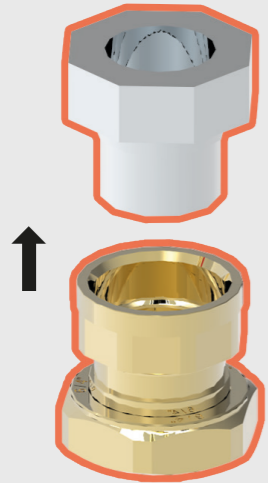


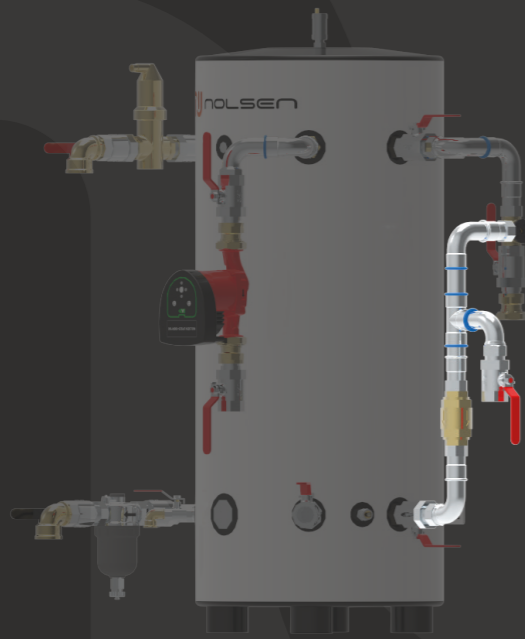




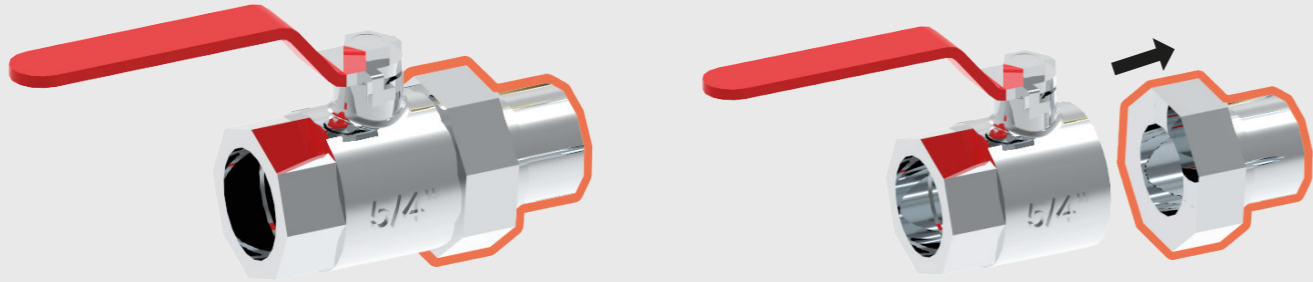
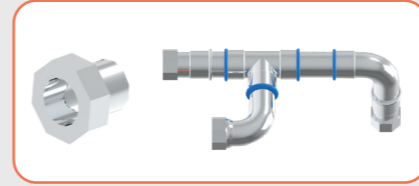
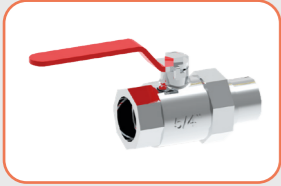




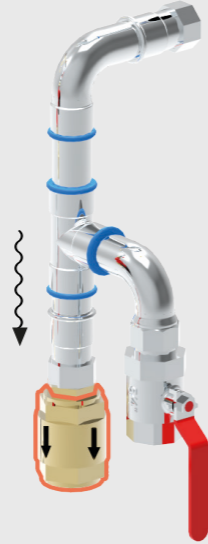
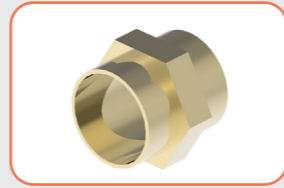
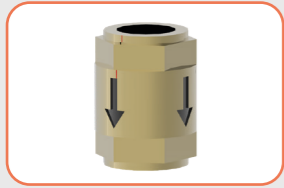


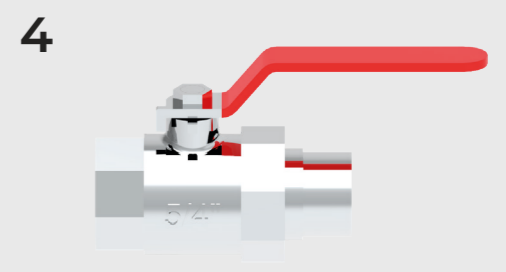
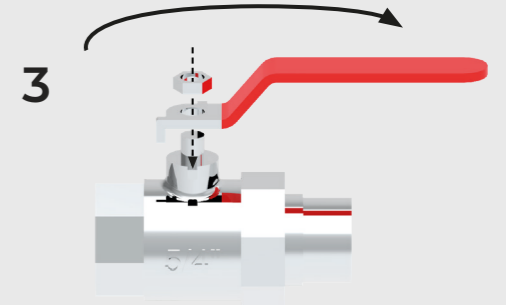
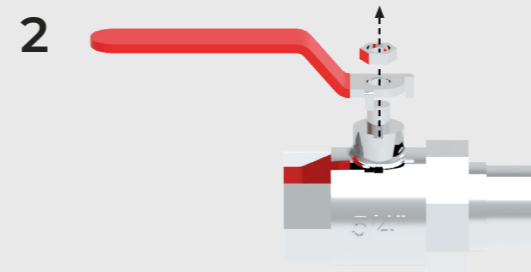
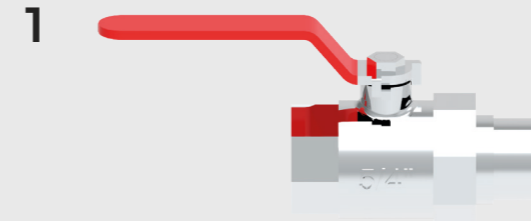
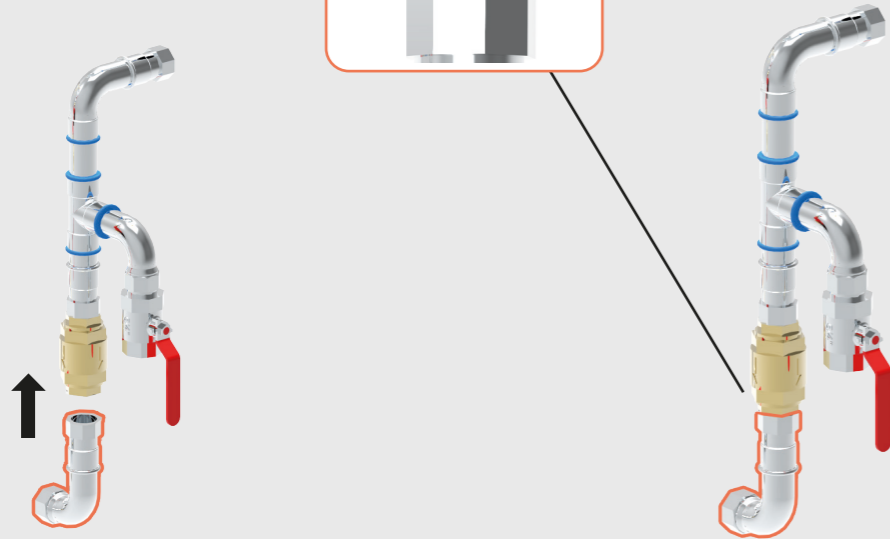
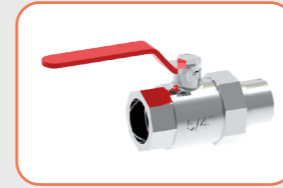


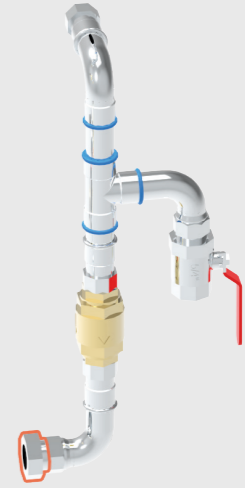
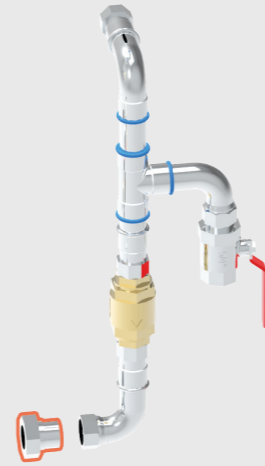
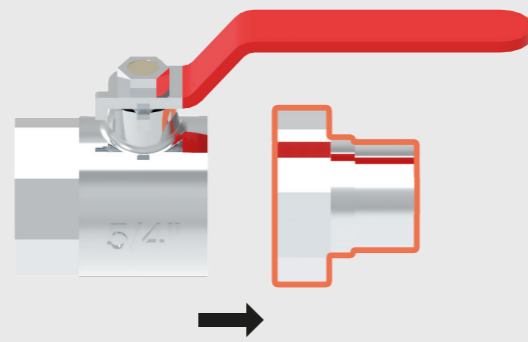
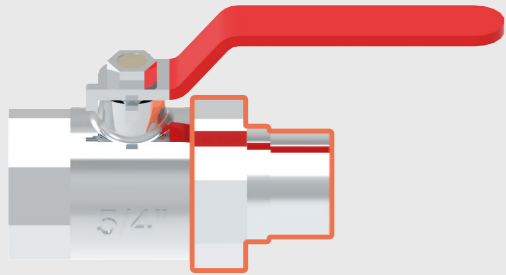
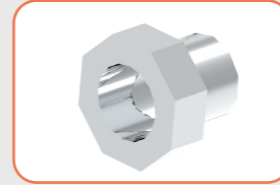
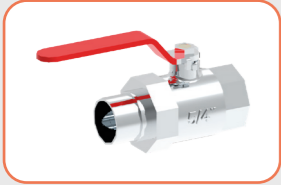
C1 C2 C3

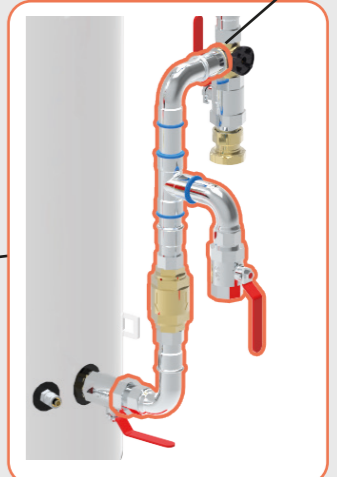
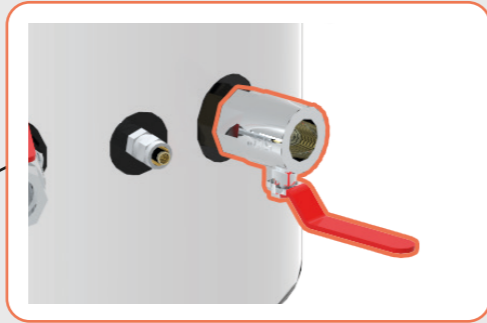
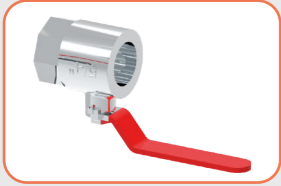


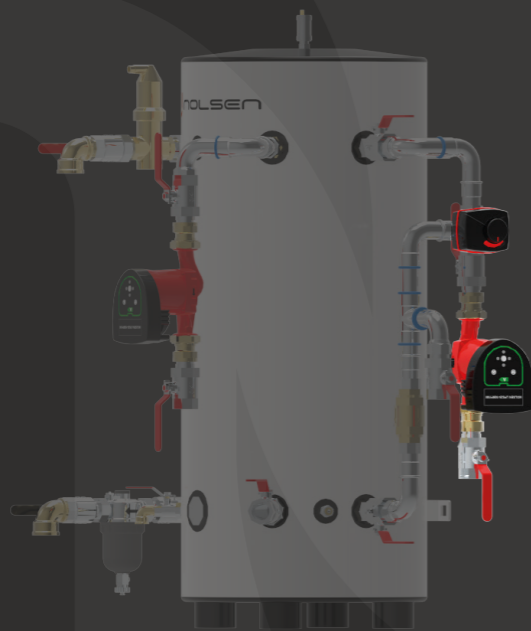












C1 C2 C3

