



NOLSEN HWT-500V1

primary side / grundierungskreis / primer oldal

Installation guide
Installationsanleitung
Összeszerelési útmutató



[EN] The co-founder of Nolsen brand is Cool4U Systems Ltd., which has achieved many awards since established in 2001, moreover, the company is exclusive distributor of the Gree air-conditioners and heat pumps' in Hungary.

The other co-founder of Nolsen is Easykit Ltd., which deals with planning and distributing of building engineering systems. Their main goal is to ensure a permanent high quality, price-value ratio and excellent service.

The Nolsen heat centers, together with their accessories, contain all the elements that are essential for heat pump heating of a residential house. In order to facilitate the installation process, our unit comes pre-assembled to the customer. The compact heating center is an excellent choice both for heating modernization and for the construction of a new heat pump system, as well as for those who are new to the implementation of heat pump systems.

[DE] Der Mitbegründer der Marke Nolsen, die Cool4U Systems Kft., die seit ihrer Gründung im Jahr 2001 eine Reihe von Auszeichnungen erhalten hat, ist auch der exklusive ungarische Vertreter von Gree-Klimaanlagen und Wärmepumpen.

Der andere Mitbegründer von Nolsen ist die Easykit Kft., die Haustechniksysteme entwickelt und vertreibt. Das Hauptziel ist es, eine gleichbleibend hohe Qualität, ein gutes Preis-Leistungs-Verhältnis und einen ausgezeichneten Service zu gewährleisten.

Die Nolsen-Wärmezentralen enthalten zusammen mit ihren Zusatzgeräten alle Elemente, die für die Wärmepumpenheizung eines Einfamilienhauses unerlässlich sind. Um die Installation zu erleichtern, werden unsere Geräte vormontiert an den Kunden geliefert. Die kompakte Wärmezentrale ist eine ausgezeichnete Wahl sowohl für die Heizungsmodernisierung als auch für die Neuinstallation von Wärmepumpensystemen und für Neueinsteiger in die Wärmepumpentechnik.

[HU] A Nolsen márka társalapítója a Cool4U Systems Kft., mely 2001-es alapítása óta elismerések sorát nyerte el, valamint nevéhez fűződik a Gree légkondicionálók és hőszivattyúk kizárólagos magyarországi vezérképviselése is.

A Nolsen másik társalapítója az Easykit Kft., mely épületgépészeti rendszerek tervezésével és forgalmazásával foglalkozik. Fő célja az állandó magas minőség, ár-érték arány és kiváló szolgáltatás biztosítása.

A Nolsen hőközpontok kiegészítő egységeivel együtt minden olyan elemet tartalmaznak, melyek elengedhetetlenek egy családi ház hőszivattyús fűtéséhez. A telepítési folyamat elősegítése érdekében berendezéseink előszerelve érkeznek a vásárlóhoz. A kompakt hőközpont kiváló választás mind a fűtőkorszerűsítés, mind pedig új hőszivattyús szisztéma kiépítése esetén, valamint azok számára is akik új belépők a hőszivattyús rendszerek kivitelezésében.

[EN] HWT-500 HEAT CENTER

Size:	1020 x 2000 x 800 mm
Shell material:	Powder coated steel
DHW volume (Gross):	400 l
DHW tank material:	Stainless steel (SUS316)
DHW tank material thickness:	1,8 mm
DHW circulation connection:	Yes, 3/4"
Heat exchanger surface:	4,6 m ²
Insulation thickness:	50 mm
Buffer volume:	80 l
Buffer tank material:	Stainless steel (SUS304)
Buffer tank material thickness:	1,8 mm
Capacity:	4-16 kW (Heatpump)
Maximum pressure, DHW:	10 bar
Maximum pressure, buffer:	10 bar
Direct circuit:	Yes, optional item
Mixed circuit:	Yes, optional item
Microbubble separator:	Yes
Magnetic dirt separator:	Yes
Air vent:	Yes
Fitting material:	Copper alloy
Accessories:	Rubber feet

[DE] HWT-500 WÄRMEZENTRALEN

Maße:	1020 x 2000 x 800 mm
Mantelung:	Pulverbeschichteter Stahl
Tankvolumen Für Warmwasser (Brutto):	400 l
Material Des Warmwassertanks:	Rostfreier Stahl (SUS316)
Materialdicke Des Warmwassertanks:	1,8 mm
Warmwasser-Kreislaufsstummel:	Ja, 3/4"
Wärmeaustauschfläche Für Das Warmwasser:	4,6 m ²
Isolierstärke:	50 mm
Volumen Des Pufferspeichers:	80 l
Material Des Pufferspeichers:	Rostfreier Stahl (SUS304)
Materialdicke Des Pufferspeichers:	1,8 mm
Empfohlene Wärmeleistung:	4 bis 16 kW (Wärmepumpe)
Maximaler Betriebsdruck,Warmwasser-Betrieb:	10 bar
Maximaler Betriebsdruck, Pufferspeicher:	10 bar
Direkter Kreislauf:	Ja, als zusätzliche Einheit
Gemischter Kreislauf:	Ja, als zusätzliche Einheit
Mikroblasenabscheider:	Ja
Magnetischer Schlammabscheider:	Ja
Automatischer Entlüfter:	Ja
Material Der Armaturen:	Kupferlegierung
Zubehör:	Gleitfuß aus Kunststoff

[HU] HWT-500 HÓKÖZPONT

Méret:	1020 x 2000 x 800 mm
Burkolat:	Porfestett acél
HMV tartály térfogat (bruttó):	400 l
HMV tartály anyaga:	Rozsdamentes acél (SUS316)
HMV tartály anyagvastagság:	1,8 mm
HMV cirkulációs csonek:	Igen, 3/4"
HMV hőcserélő felület:	4,6 m ²
Hőszigetelés vastagság:	50 mm
Puffer tartály térfogat:	80 l
Puffer tartály anyaga:	Rozsdamentes acél (SUS304)
Puffer tartály anyagvastagság:	1,8 mm
Ajánlott hőtermelő teljesítmény:	4-16 kW (Hőszivattyú)
Maximum üzemi nyomás, HMV:	10 bar
Maximum üzemi nyomás, puffer:	10 bar
Direkt kör:	Igen, kiegészítő egységként
Kevert kör:	Igen, kiegészítő egységként
Mikrobuborék leválasztó:	Igen
Mágneses iszapleválasztó:	Igen
Automata légtelenítő:	Igen
Szerelvények anyaga:	Réz ötvözet
Tartozékok:	Műanyag csúszótalp



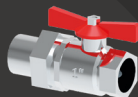
A1



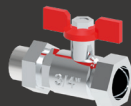
x 2
6/4"



x 2
1/2"



x 2
1"



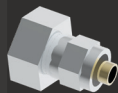
x 1
3/4"



x 1
1/2"



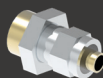
x 1
1/2"



x 1
16x2 mm x 3/4"



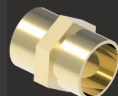
x 1
16x2mm 1/2"



x 1
16x2 mm x 3/4"



x 1
3/4"



x 1
1/2"



x 1
3/4"

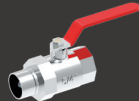


x 1
1/2"

A2



x 1
5/4"



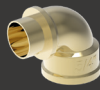
x 2
5/4"



x 2
5/4"



x 4
5/4"



x 3
90° 5/4"

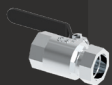


x 2
5/4"

A3



x1
5/4"

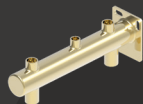


x2
5/4"



x2
5/4"

A4



x1



x1
1/2"



x1
16x2 mm x 3/4"



x1
3/4"



x1
1/2" x 3/4"



x1
1/2"

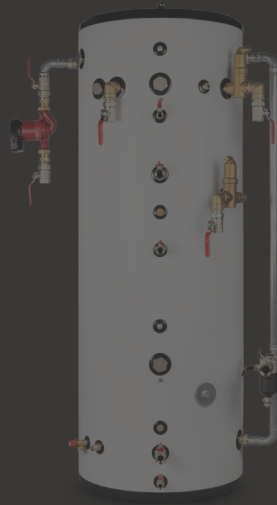


COMBINED TANK
KOMBISPEICHER
KOMBINÁLT TARTÁLY

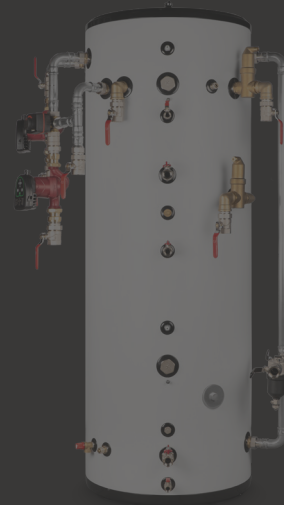


PRIMARY SIDE
GRUNDIERUNGSKREIS
PRIMER OLDAL

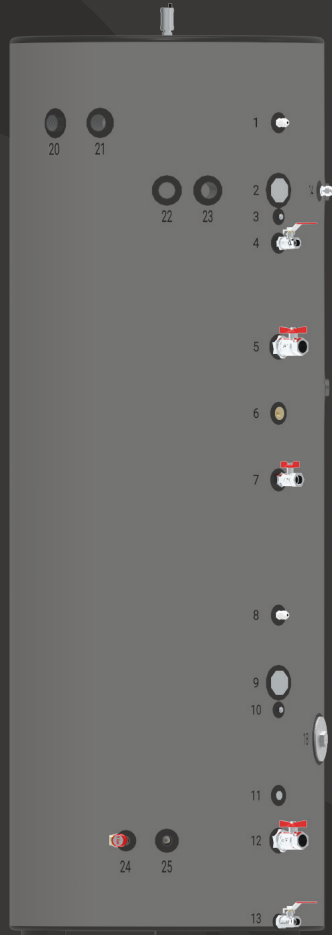




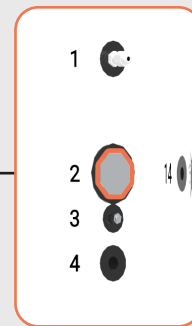
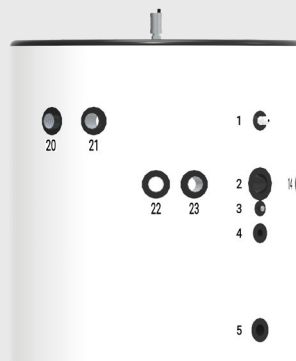
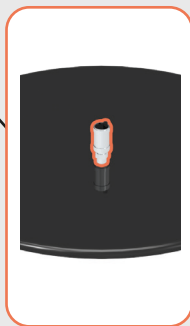
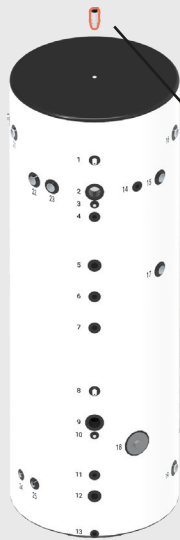
DIRECT CIRCUIT
DIREKTER KREISLAUF
DIREKT KÖR

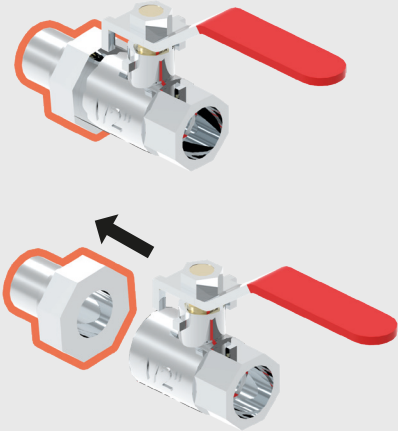
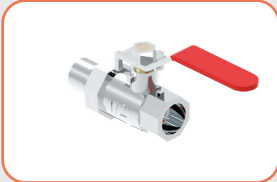
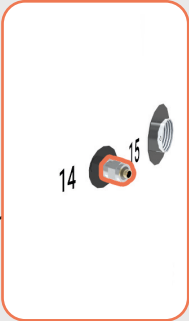
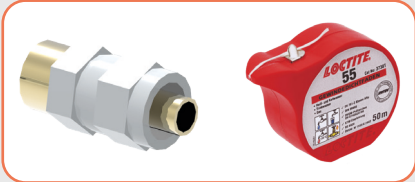


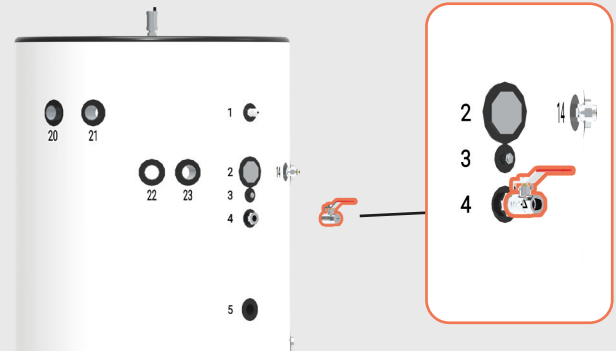
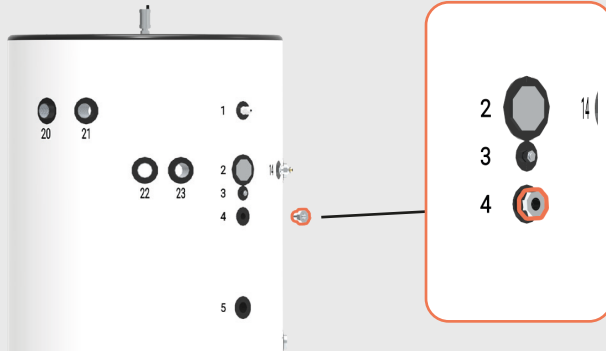
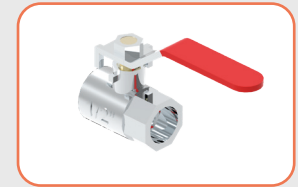
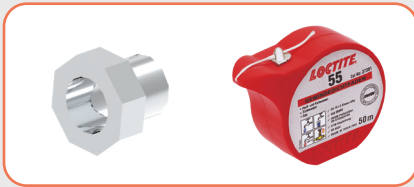
MIXED CIRCUIT
GEMISCHTE KREISEINHEIT
KEVERT KÖR

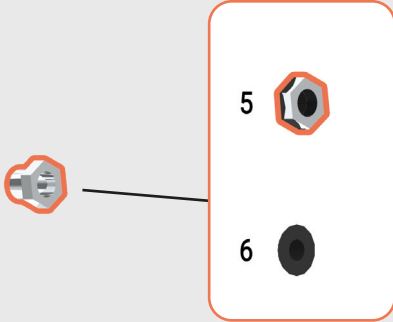
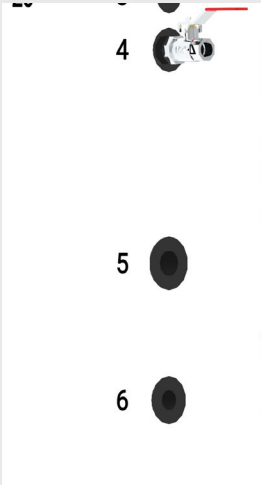
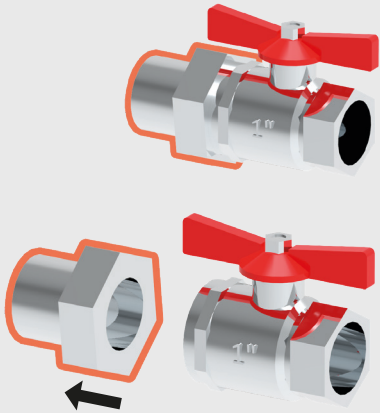
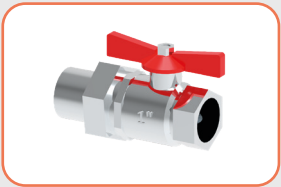


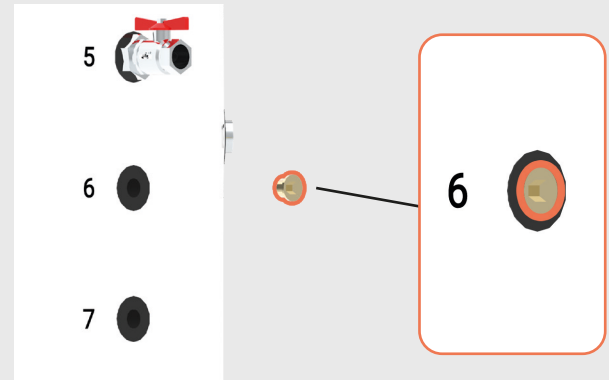
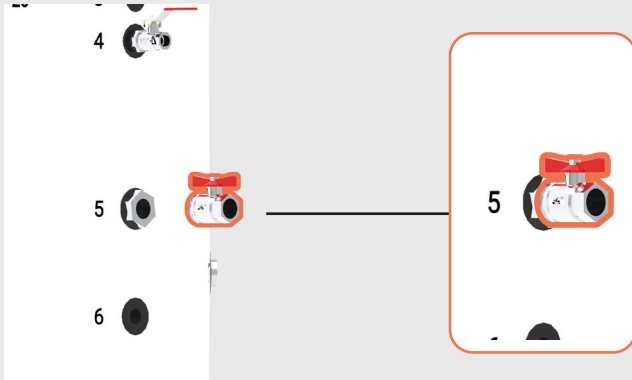
A1 A2 A3 A4

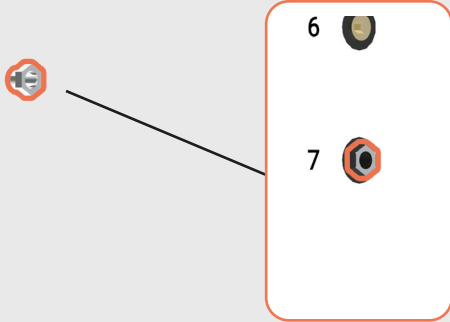
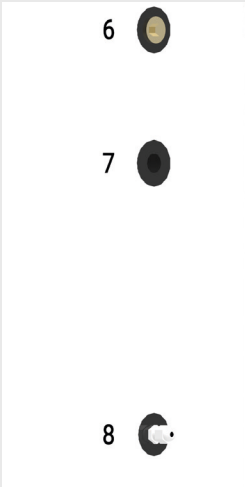
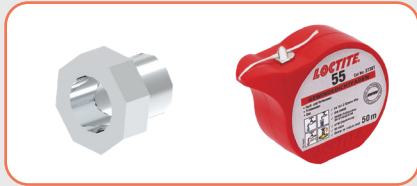
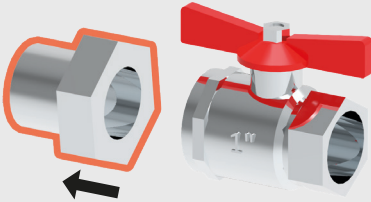
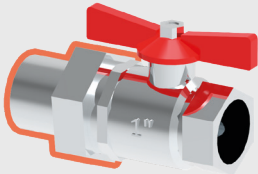
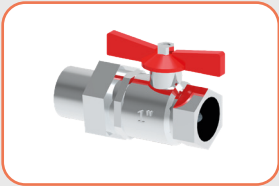


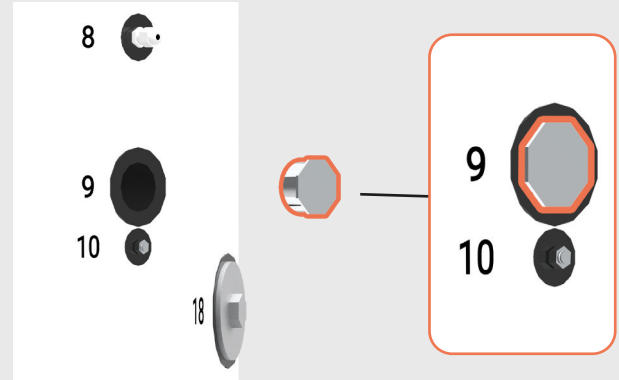
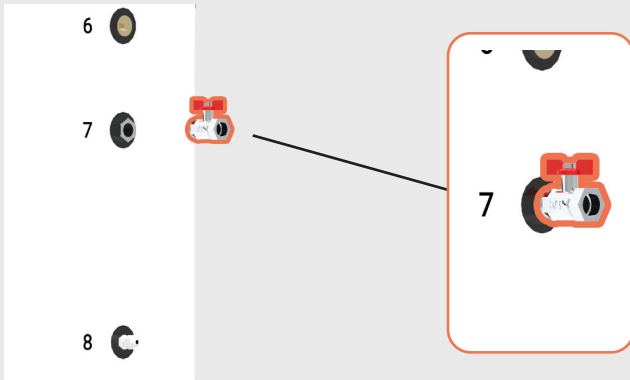
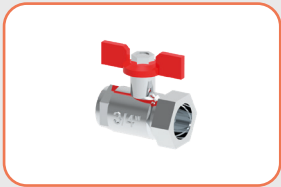


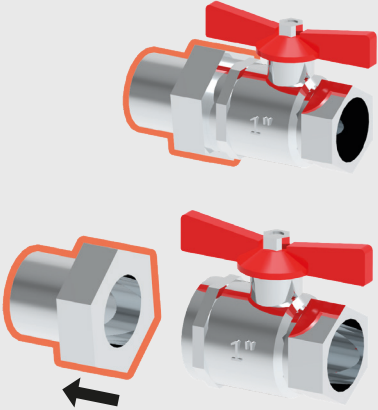
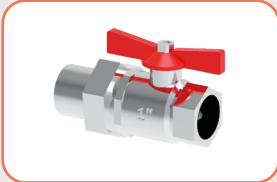
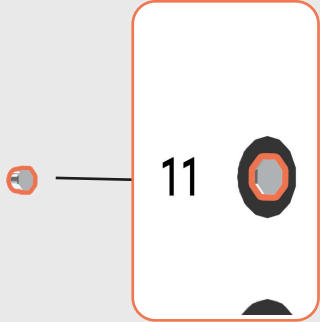
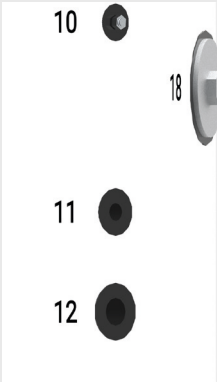


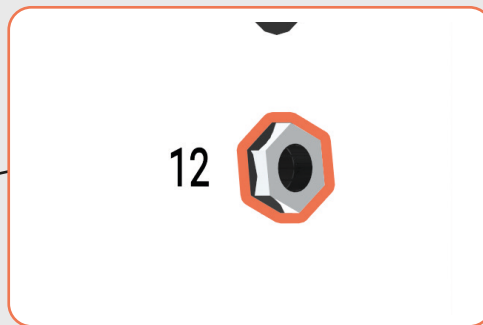
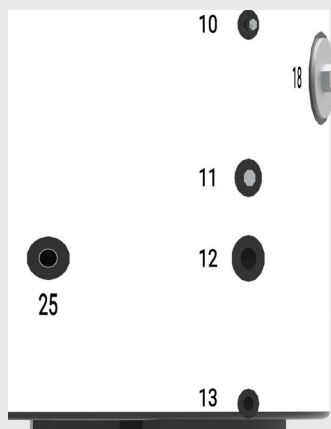


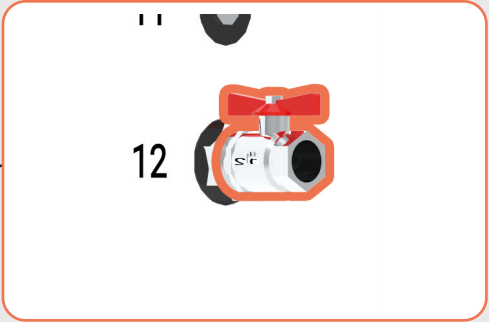
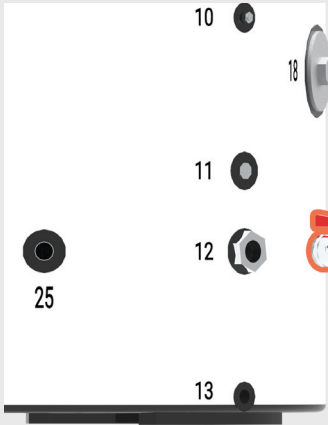


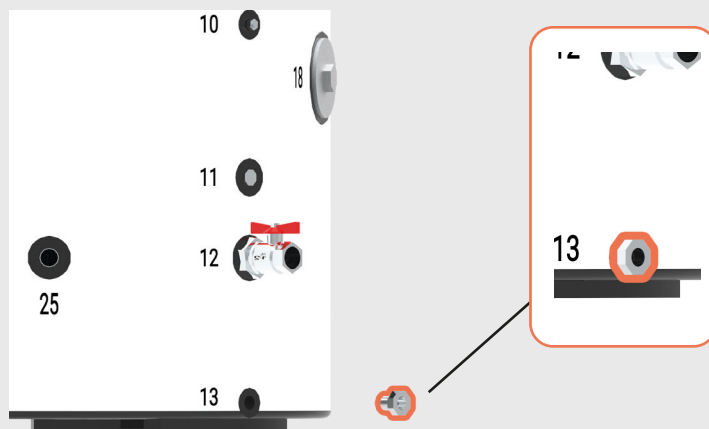
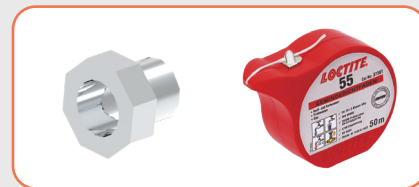
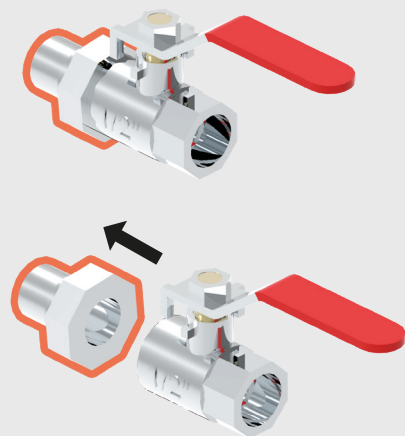
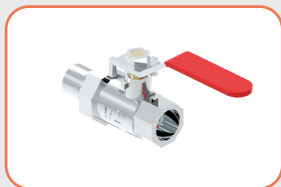


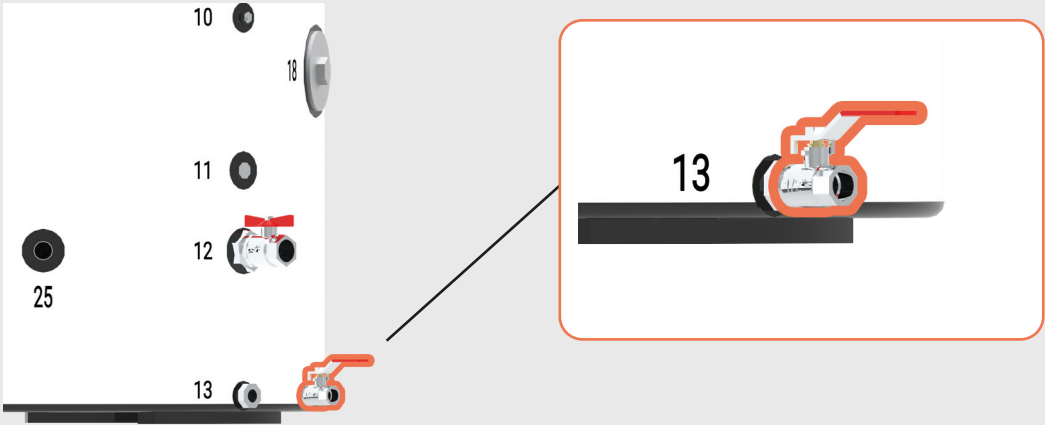


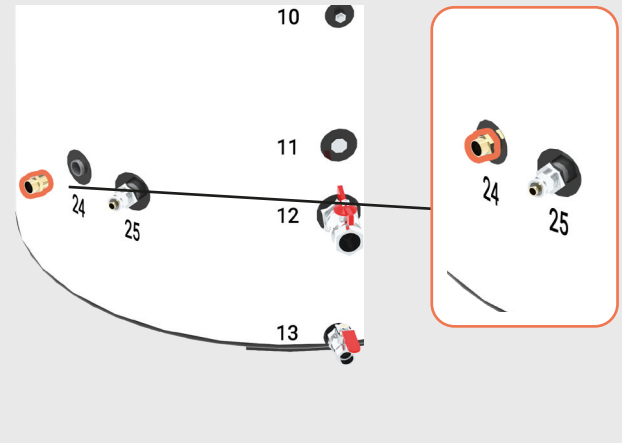
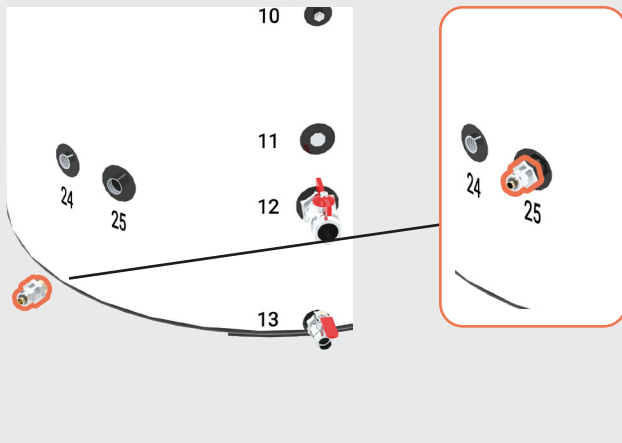
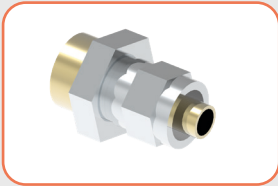


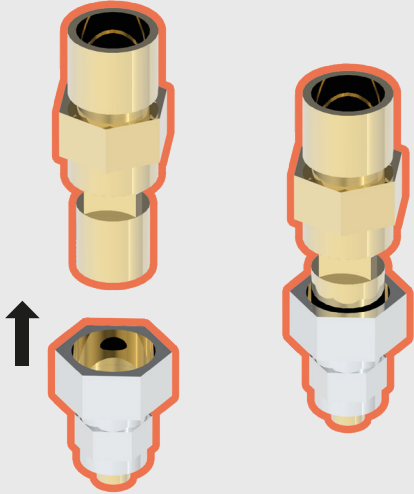
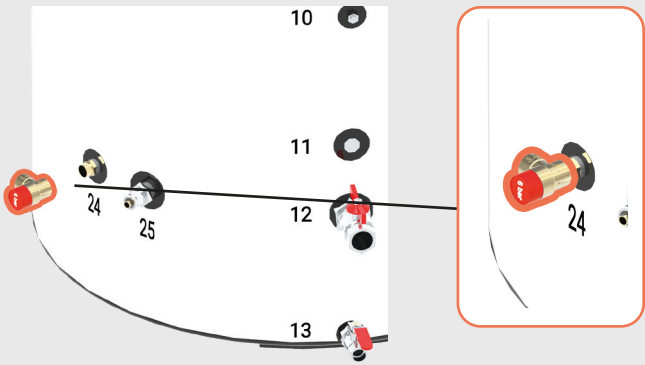
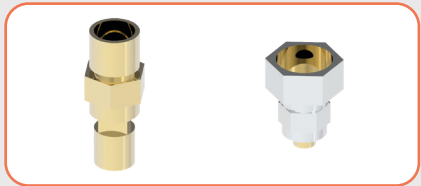


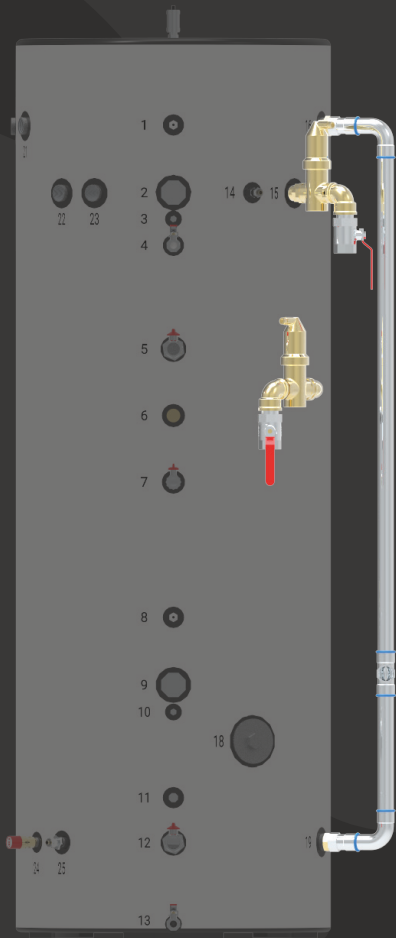




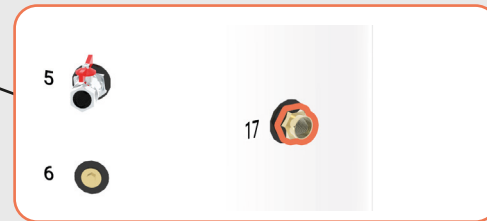
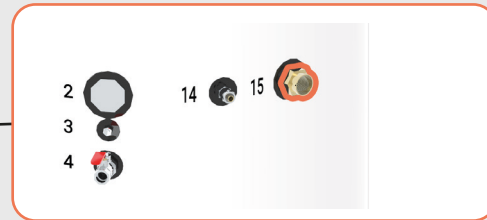
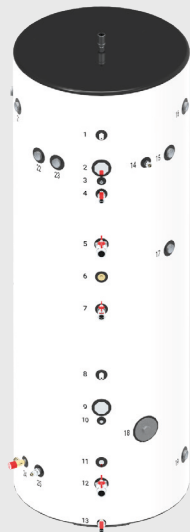


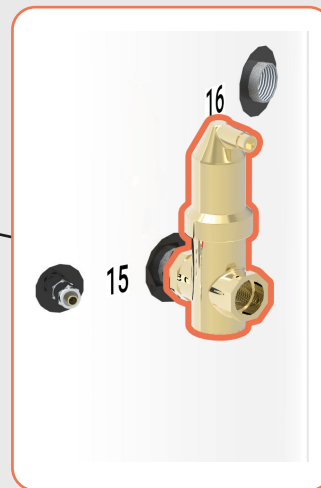
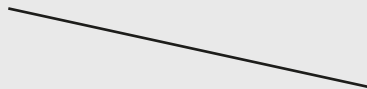
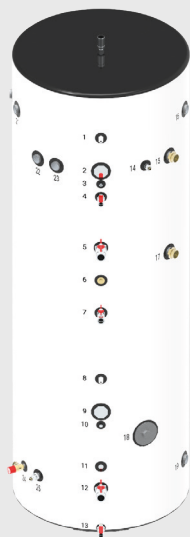


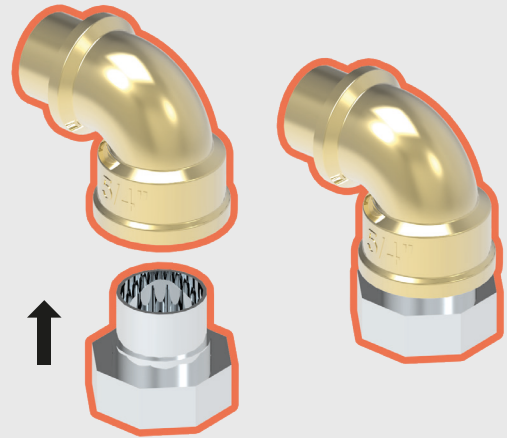
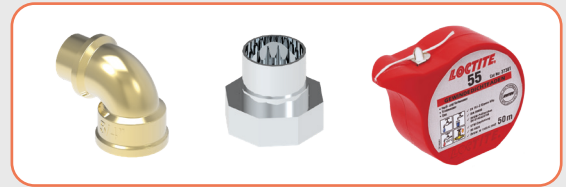
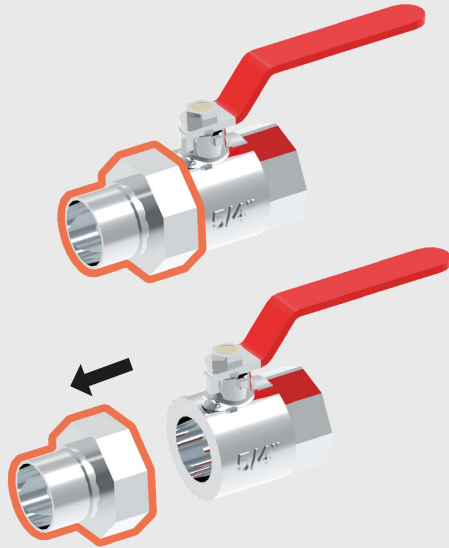


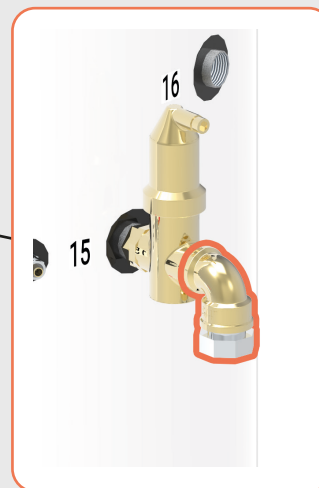
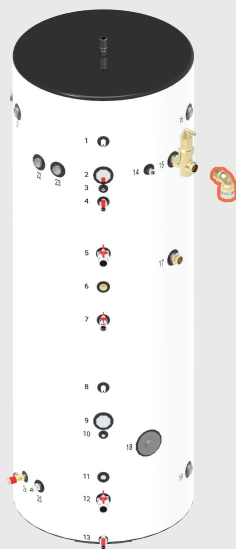


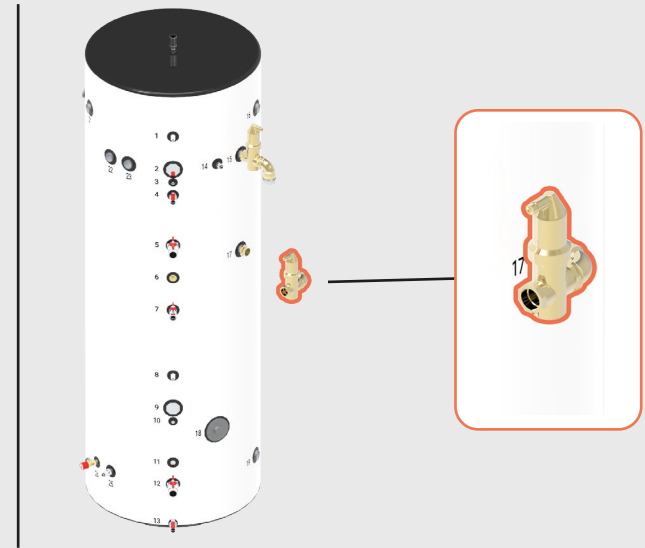
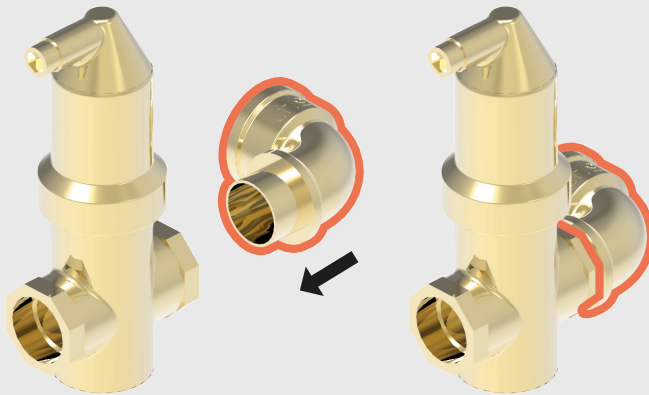
A1 A2 A3 A4

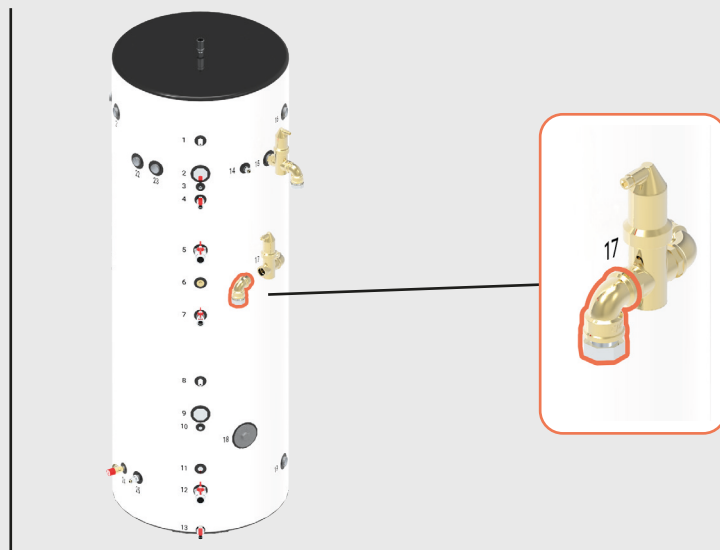
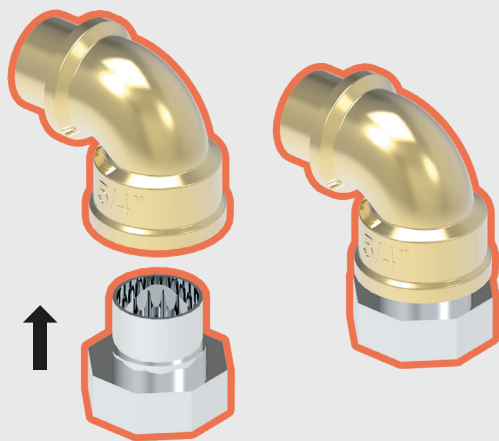


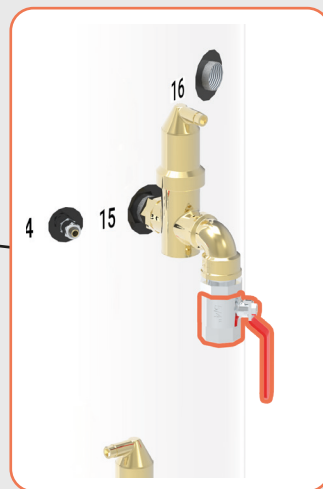
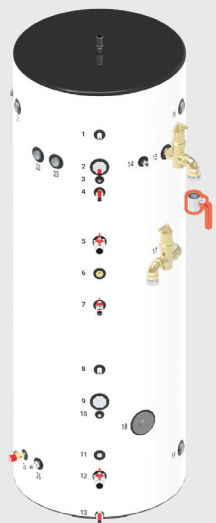


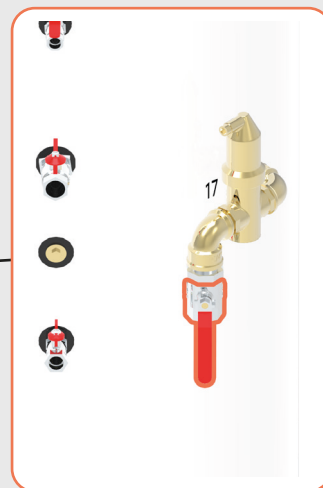
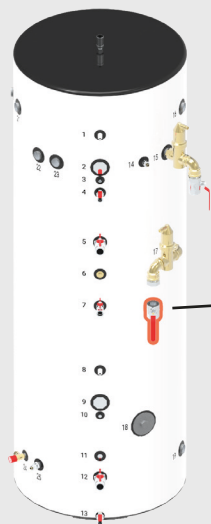


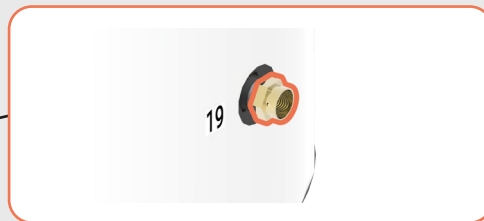
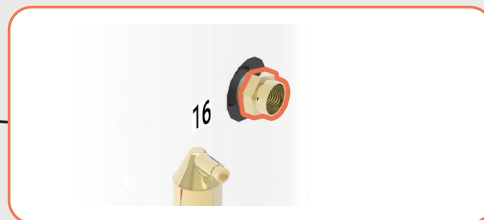
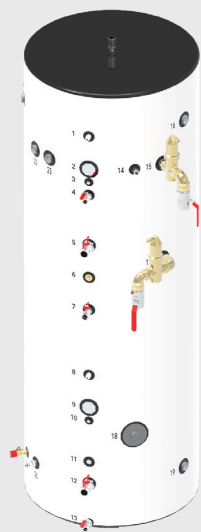


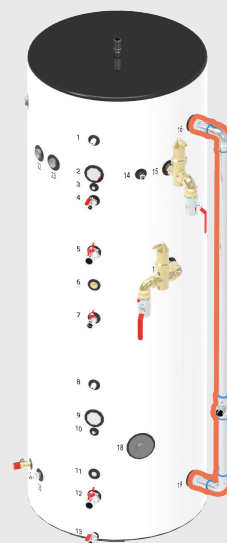
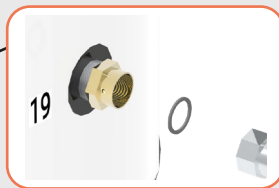
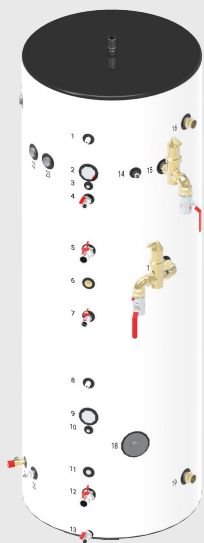


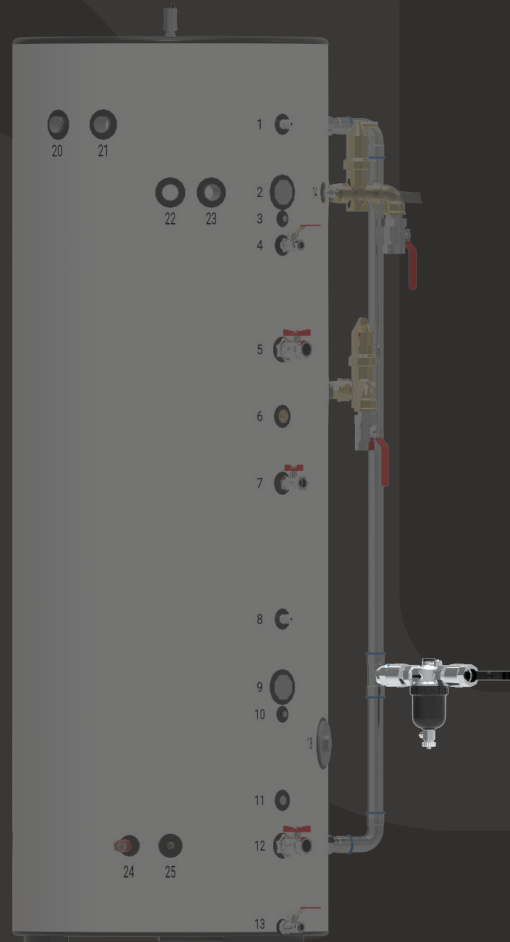




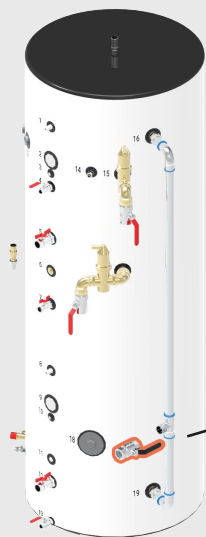


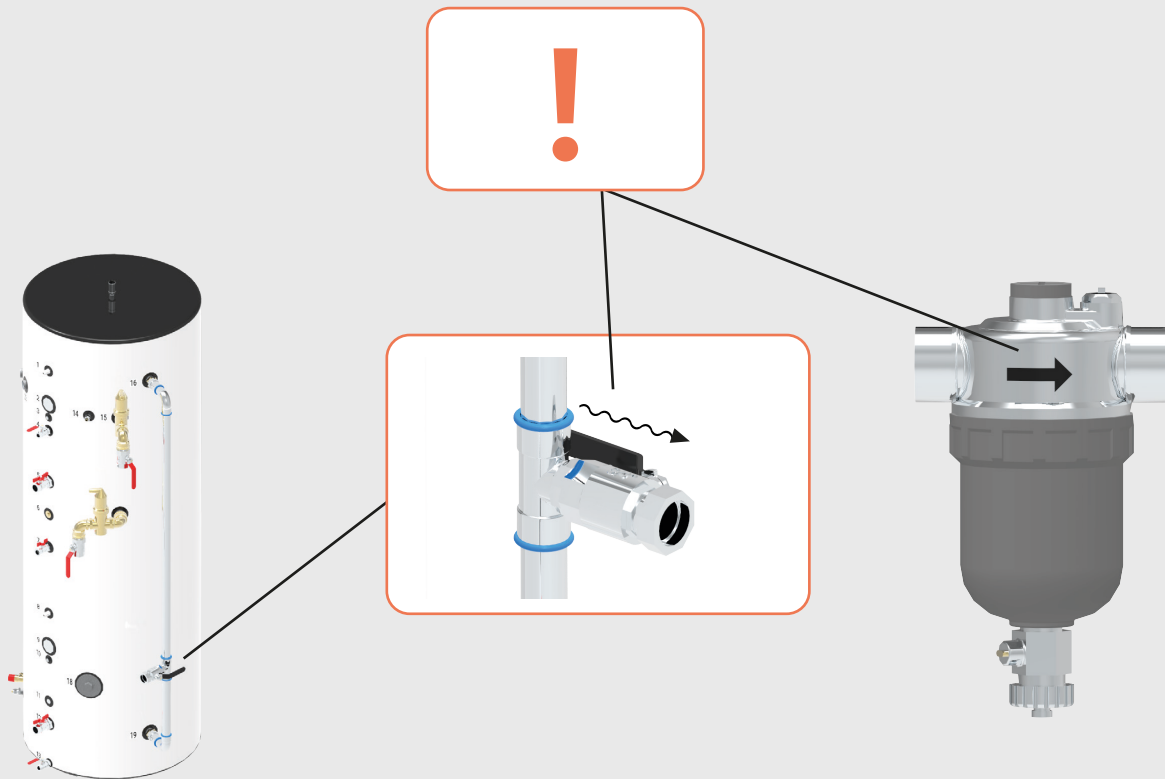




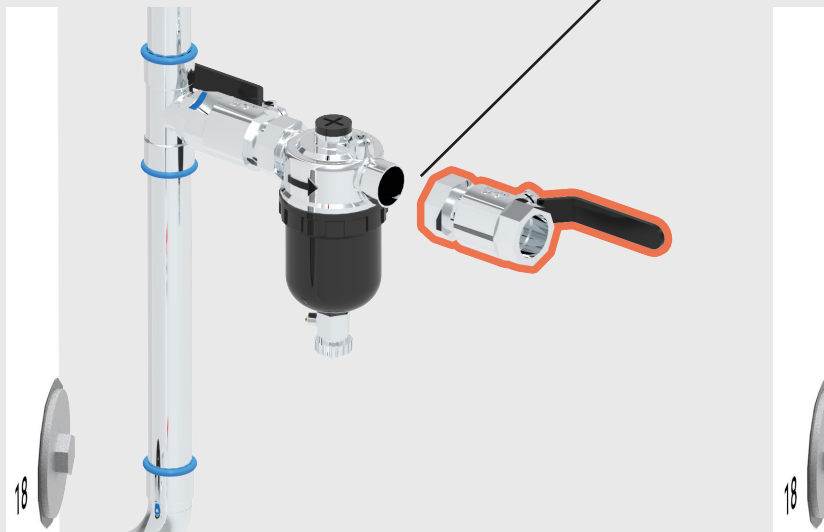
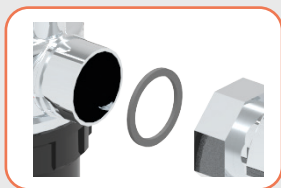


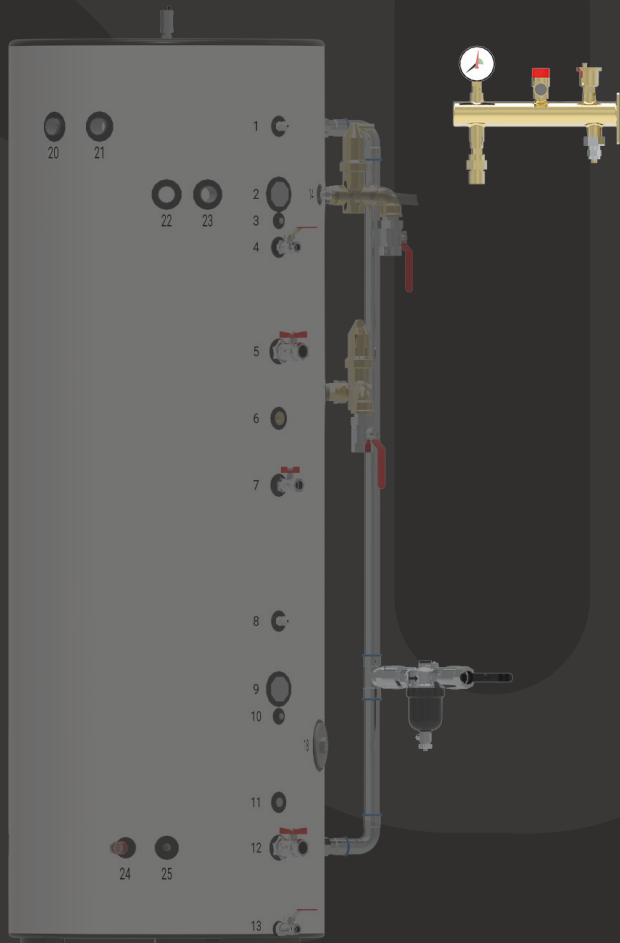
A1 A2 A3 A4











A1 A2 A3 A4

